

Mini Power Steering Unit



Feature

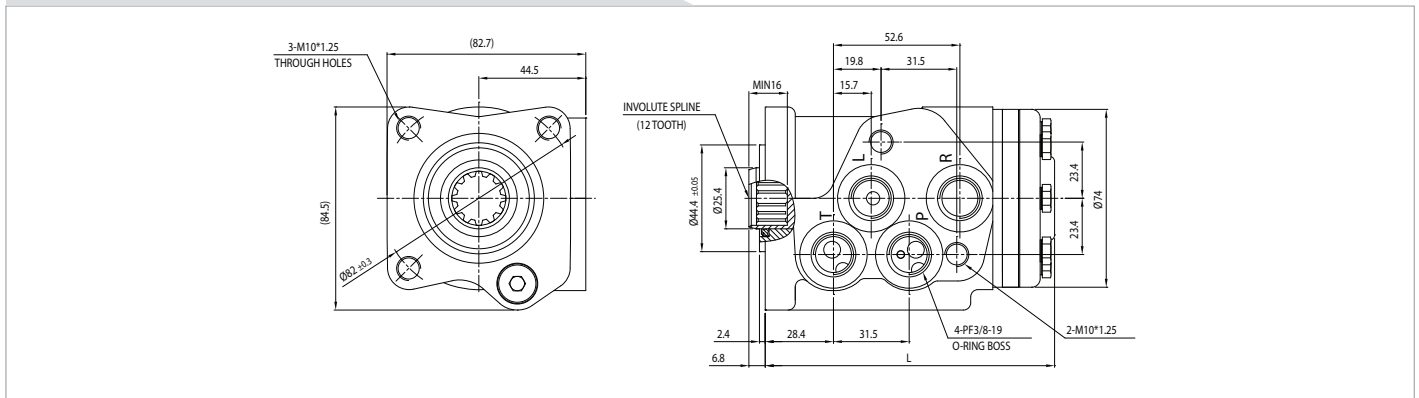
- Smaller and lighter than standard model: Applicable to light vehicles such as garden tractor, municipal vehicles, small tractor.
- Valve block can be attached.
- Special functions according to customer's request are available. (high back pressure, low input torque etc.)

Specifications

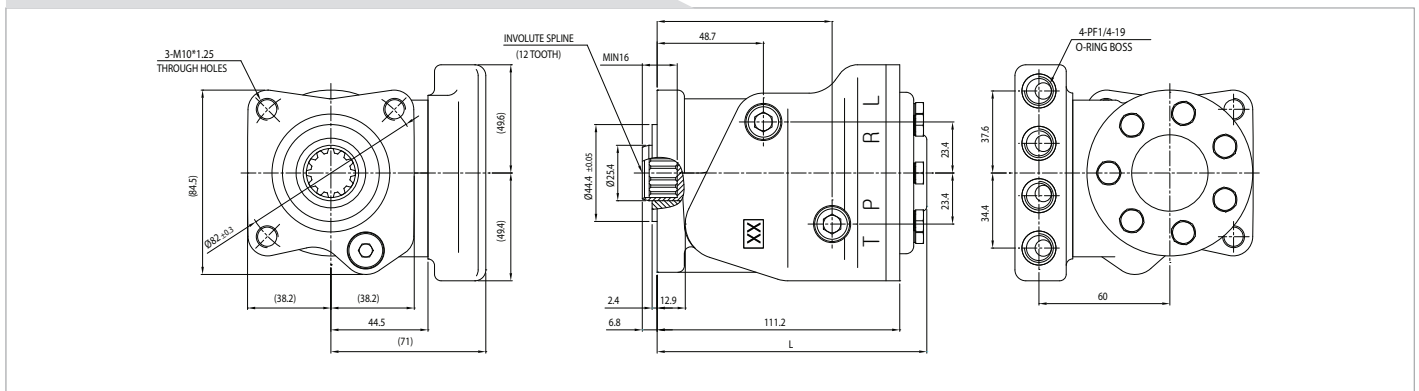
- Max. System Pressure: 140 kgf/cm²(13.7 MPa)
- Rated Flow: 8 l/min
- Relief Pressure Range: 60~140 kgf/cm²(5.9~13.7 MPa)
- Max. Back Pressure: 20 kgf/cm²(2.0 MPa)
- Steering Input Torque: 0.2 kgf.m
- Max. System Operation Temperature: 95 °C
- System: Open center(non load or load reaction)

Displacement(cm ³ /rev)	Length L(mm)
31	120.2
40	122.4
51	120.7
62	121.8
69	122.8
74	123.6
80	124.7

Typical mini type



Port block built-in type



Code and specification

MN051A08008P1M1A

M	N	051	A	080	08	P1	M1	A
---	---	-----	---	-----	----	----	----	---

- ① Type
M : Mini
- ② System Symbol
N : Open Center, Non Load Reaction
L : Open Center, Load Reaction
- ③ Displacement
031~080 : 31~80 cm³/rev
- ④ Mounting Block
A : Port Block(Standard)
B : Port Block(With 15 Deg.)
X : Without Port Block
- ⑤ Relief Pressure[kgf/cm²]
Setting Range of 60 ~ 140 kgf/cm²
"080" : 80 kgf/cm², "000" : Without Relief Valve
- ⑥ Flow Rate of Relief Pressure
08 : 8 l/min
Without Relief Valve, skip to the next
- ⑦ Port Size
P1 : PF 1/4 O-ring port
P3 : PF 3/8 O-ring port
U1 : 9/16-18 UNF O-ring port
- ⑧ Mounting Screws Sizes and PCD
M1 : M10*1.5P, PCD Ø82.6
M2 : M10*1.5P, PCD Ø82
M3 : M10*1.25P, PCD Ø82.6
M4 : M10*1.25P, PCD Ø82
C1 : 3/8-16 UNC, PCD Ø82.6
C2 : 3/8-16 UNC, PCD Ø82
- ⑨ Design Symbol
A : Initial Design