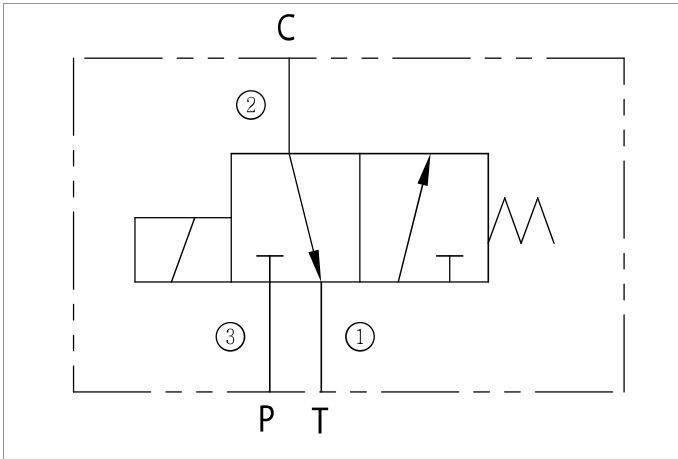


# Solenoid Valve



Being DC operated, the solenoid valve is a cartridge, manifold inserting type. It is a cost effective solution to the need of on-off switching function.

## \* Specifications

Oil: SAE 10 To 30WT

Flow: 5 lpm @ 1500 kPa

Internal Leakage: 10 ml/min @ 2760 kPa

Operating Temperature: -40 ~ 105 °C

Coil: 12 VDC, (14.4W)

## Dimensions and Cavity

