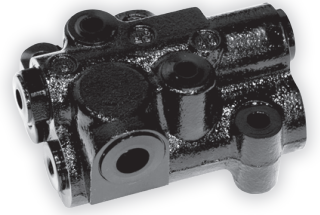


SINJIN PRECISION CO., LTD.

Dual Flow Divider Valve



Flow control and priority valve is combined as a one part: The Dual Flow Divider. The flow control part handles the flow for the vehicle braking control. The priority valve part controls the flow and pressure of the Power Steering Unit. It is compact and cost effective solution for small off-road vehicles.

* Specifications

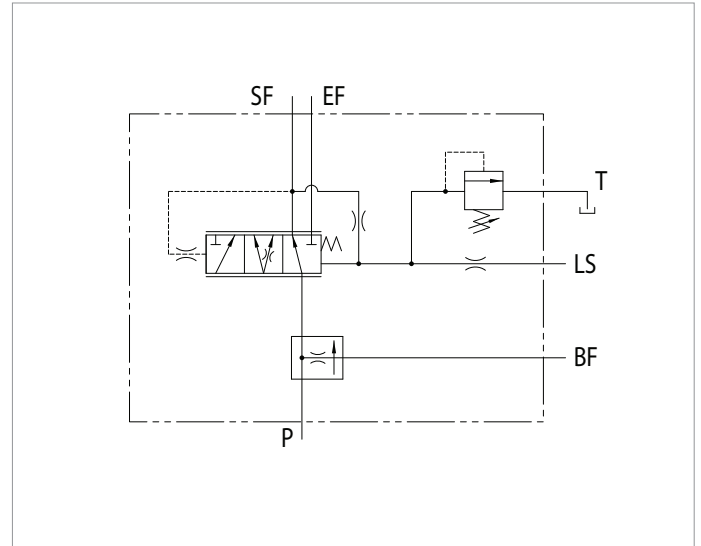
Max. Flow : 85 lpm

Control Flow for Brake: 3.0 ~4.5 lpm

Relief Pressure: 120 bar at 25 lpm

Control Pressure: 10.5 bar

Steering System: Internal Pilot, Dynamic Signal Type



Dimensions

